

Over 3 million Sq. ft. of State of the Art Infrastructure

30+ Infrastructure Ready Plug & Play Industrial Plots of various sizes

30 Plug & Play Sheds for medium & small units

## GUJARAT AGRO INFRASTRUCTURE MEGA FOOD PARK

EMPOWERING FARMERS  
EMPOWERING GUJARAT

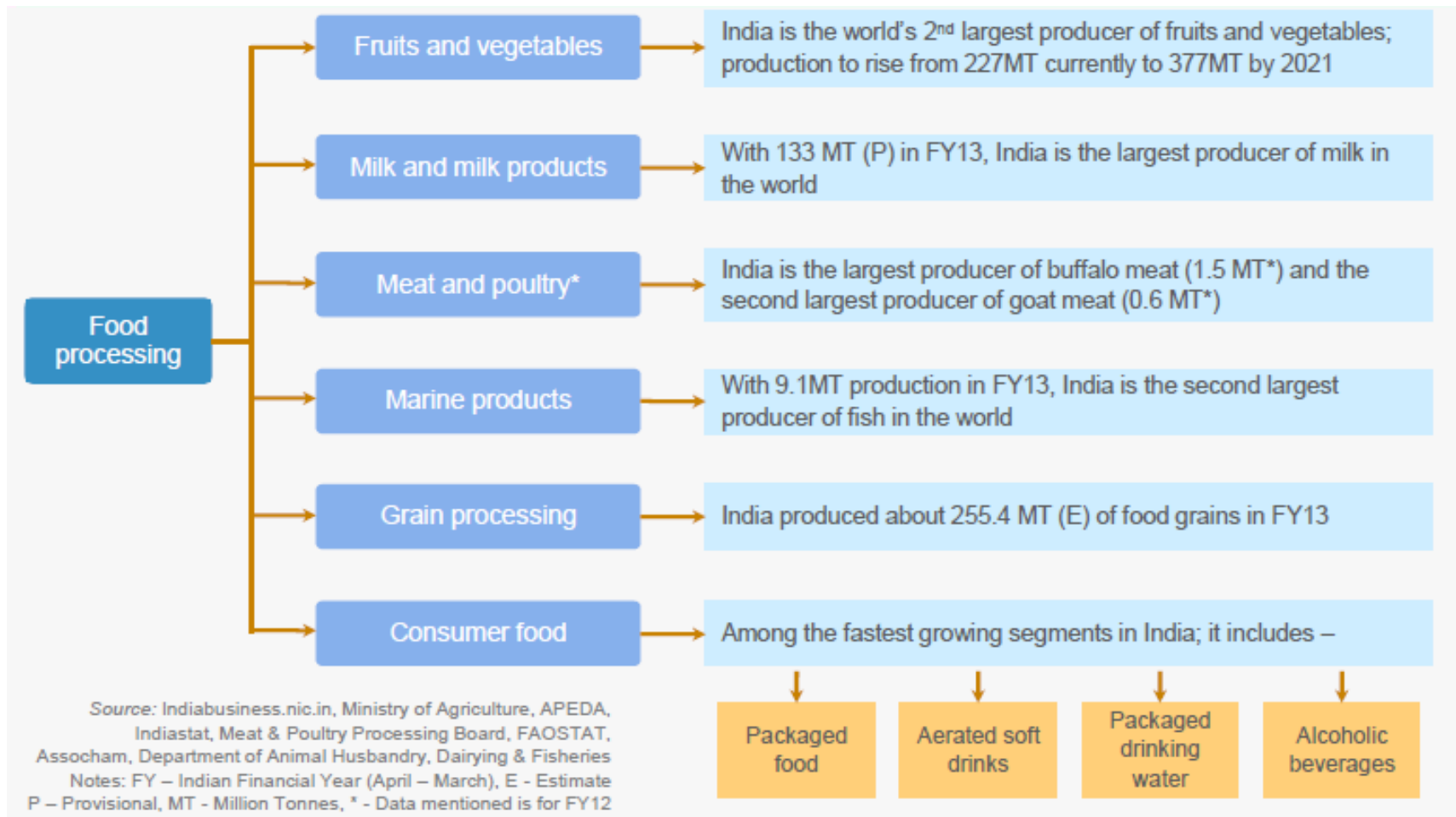


Industrial Park for Food Processing Industries

Location on SH 165 at village Shah/Vasravi, Taluka Mangrol, District Surat, Gujarat.



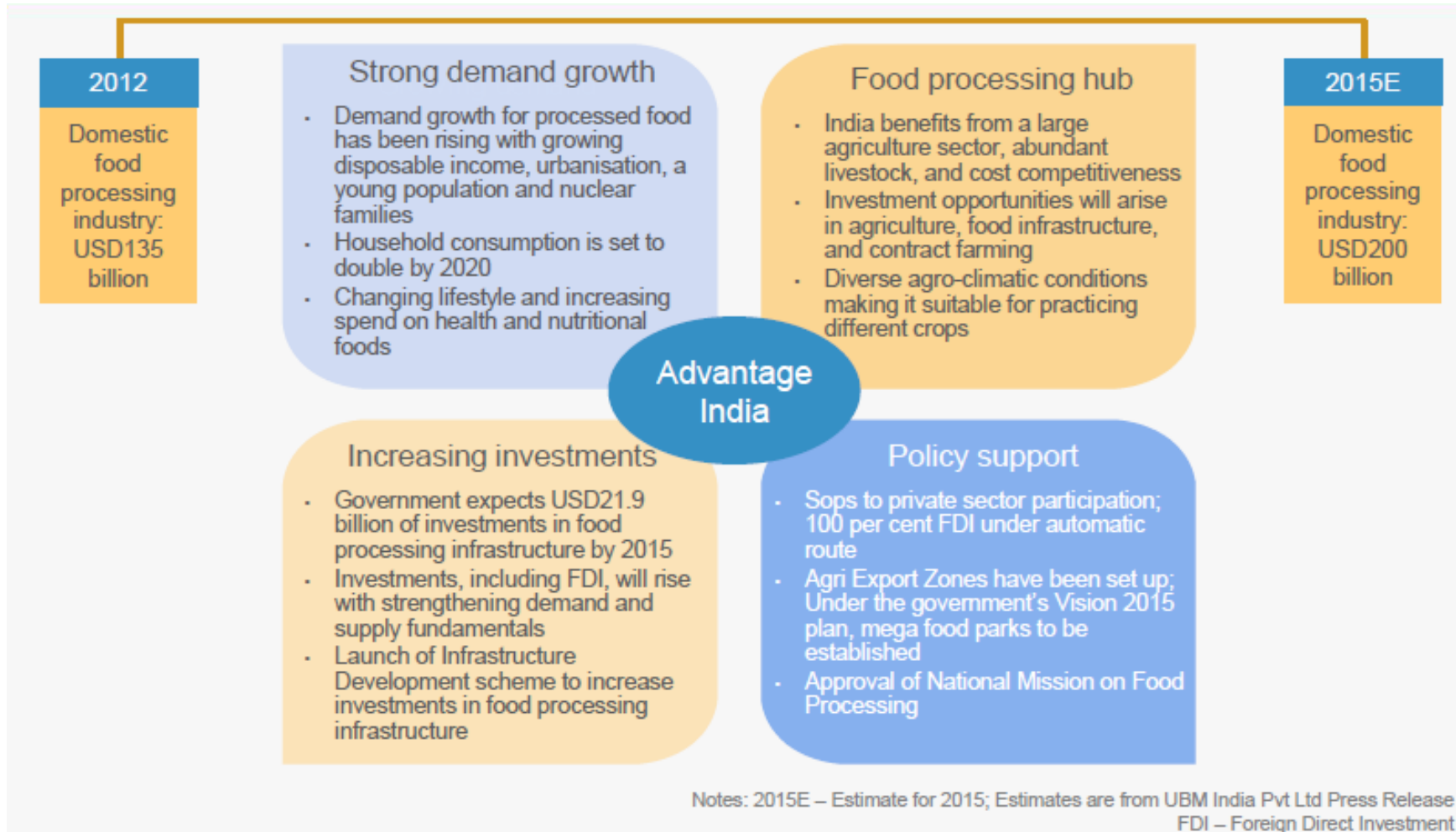
# Major Food Processing Segments – All Feasible in India



**Significant Food Segments - Scalability and Sustainability Across All Segments**



# Destination India – The Strategic Advantage

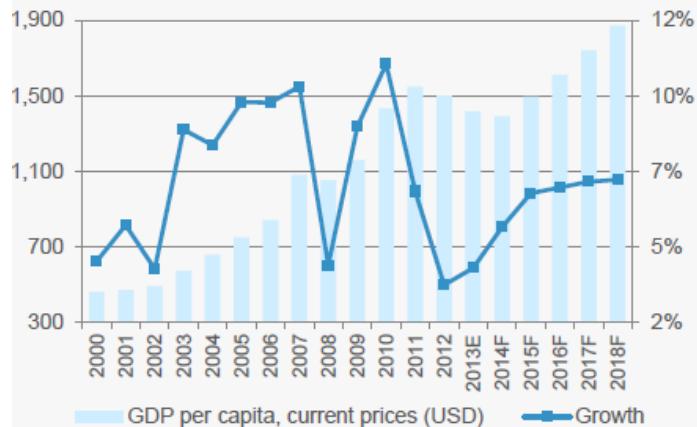


**Fast Growing Domestic Market PLUS a Stable and Sustainable Export Market**



# What is Fueling Domestic Growth ?

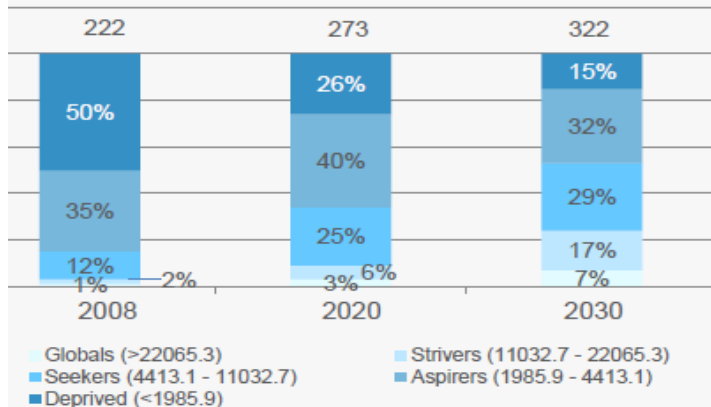
Rising per-capita income in India



Source: IMF, Aranca Research  
Notes: E - Estimate, F - Forecast

## Changing wealth dynamics of India's population

Million Household, 100%



## Rising disposable incomes

- Strong growth in per-capita income has resulted in greater demand for food items
- Incomes have risen at a brisk pace in India and will continue rising given the country's strong economic growth prospects. Nominal per capita income is estimated (IMF) to have recorded a CAGR of 9.0 per cent over 2000–13
- There has also been a shift in demand –
  - From carbohydrates to meat products (in line with the various phases of economic growth)
  - To convenience foods, organic and diet foods

## Growing middle class, urbanisation

- Strong economic growth since the 1990s has led to–
  - Rapid urbanisation and a growing middle class
  - Nuclear families and dual income households
- Coupled with a young population and increasing media penetration, this has led to a surge in demand for packaged food, alcoholic and non-alcoholic beverages, snacks, savouries, etc.

## Growth Built on Fundamentals



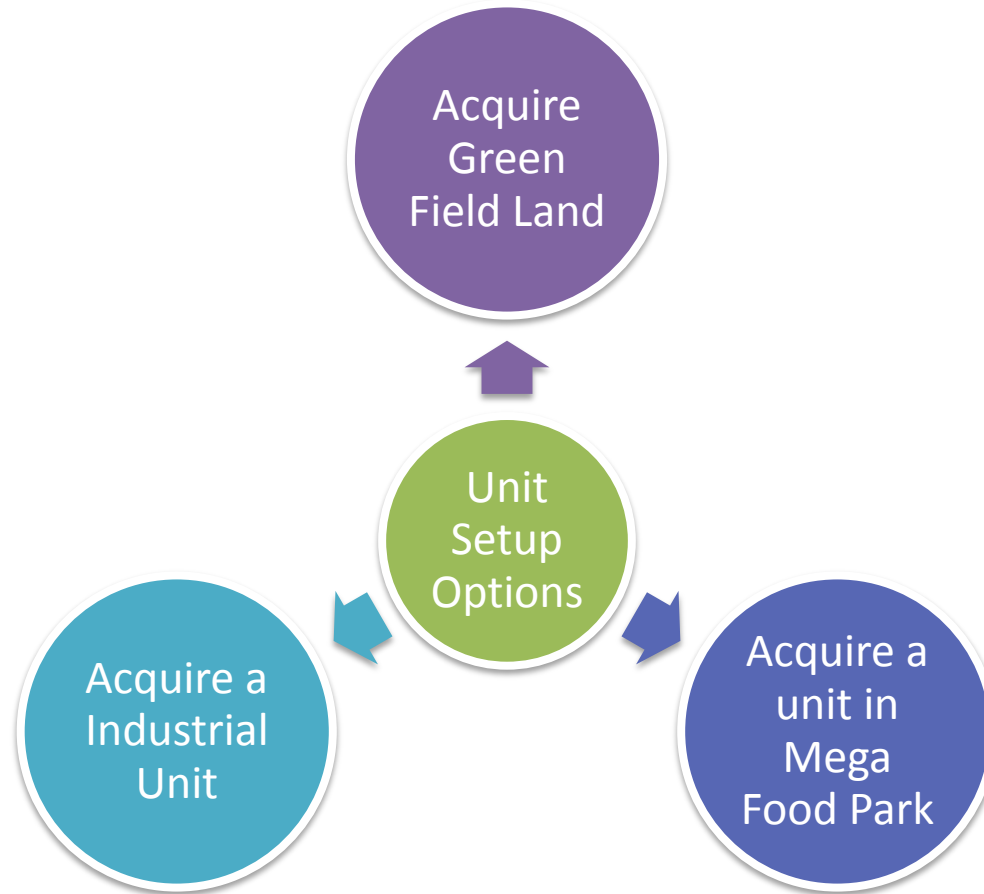
It sure looks Interesting .....

**What would it take to become a part of  
FOOD PROCESSING INDUSTRY -One of the  
FASTEST GROWING SECTORS IN INDIA -  
a **\$ 260 Billion market**- poised to  
grow at a rate of more than 15% year on  
year!!**





**ALL IT TAKES to join the **USD 260 Billion & Growing** Industry is to Set up a Food Processing unit!! & the **OPTIONS:****



**Yes! Multiple Options to enter - but what effort would it take to mobilize?**



# Food Processing Unit – Setup Effort estimation in India

Factors	Green Field Land	Industrial Unit	Food Park Unit
Statutory Approvals	Difficult + Time Taking	Some May Be Available	Mostly Readily Available
Constructed Promises	Difficult + Time Taking	Readily Available	Readily Available
Power Supply	Difficult + Time Taking	Readily Available	Readily Available
Clean Water Supply	Difficult + Time Taking	May be Readily Available	Readily Available
Effluent Treatment Plant & Approvals	Difficult + Time Taking	May be Readily Available	Readily Available
Road Infrastructure & Security	May Not Be Readily Available	May be Readily Available	Readily Available
Clean & Non Polluted Environment	Available	Not Available	Readily Available

**With a food Park , save on up to 18 months of effort , Manpower cost and setup cost & time from day 1.**



# Introducing



## A Mega Food Park Project





# Key Advantages GAIMFP –Through the Scanner

MOST IMPORTANT ASPECT – LOCATION, LOCATION, LOCATION !! Is Strategically Located

is built in Pollution Free Area with excellent connectivity

offers ready PLUG & PLAY Infrastructure to start

offers suitable facilities for Food Processing Industry not general industrial facilities

offers ancillary support system for processing & warehousing

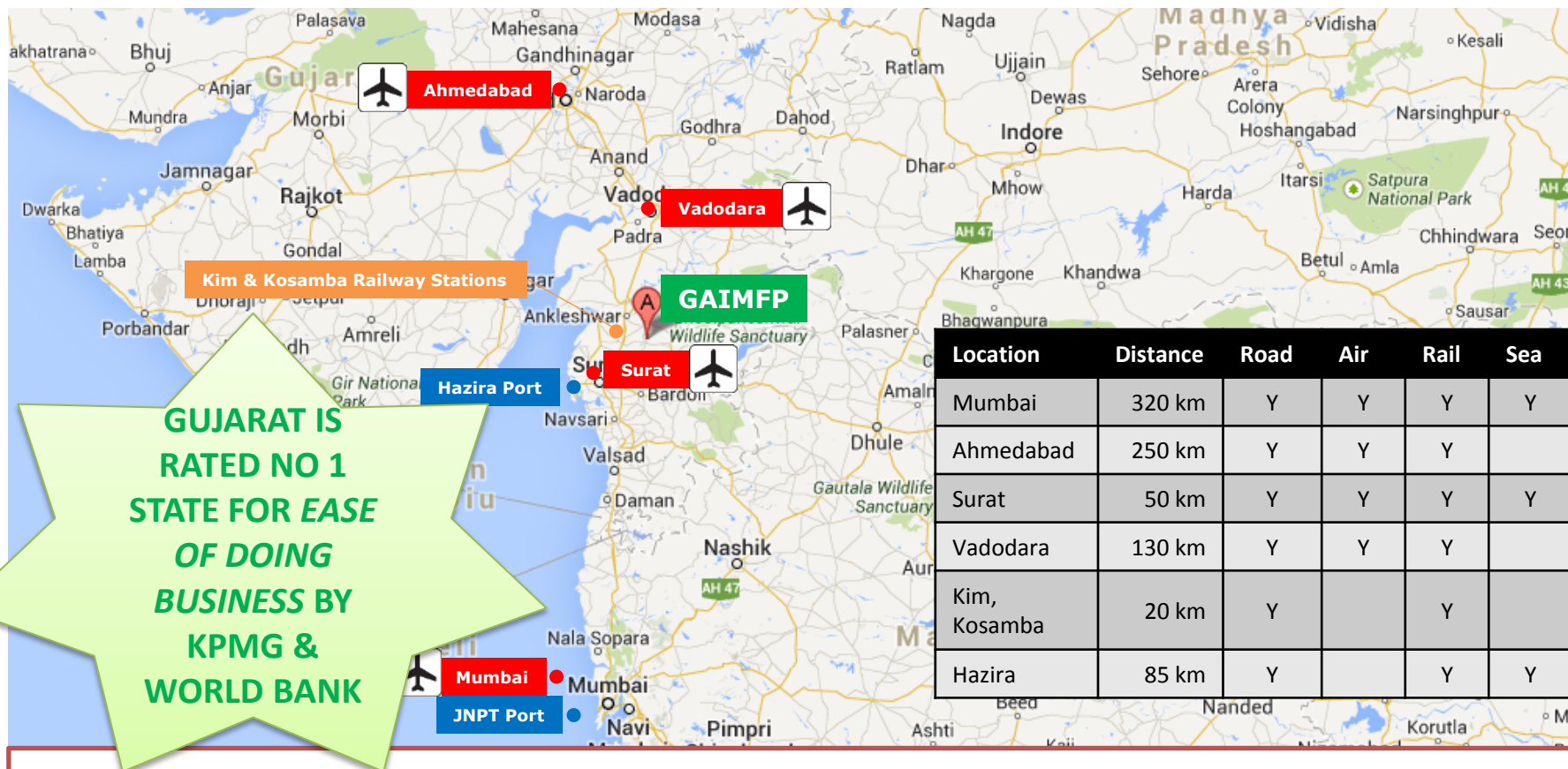
Is located in area which has ample labor supply

offers logistical support

is managed by experienced promoters



# GAIMFP is Located Strategically at Mangrol, Near Surat, Gujarat



## Location – Location – Location!!!

An Unmatched Connectivity for a Global Footprint offered by none other  
**40% of India's import export cargo handled by Gujarat**



# Strategic Location for Sourcing Raw Materials

Vegetables

Pulses

Dairy

Poultry

Interestingly a numbers of farmers groups, NGOs and Co-Operatives have shown interest in working with MFP units for mutual advantage. MFP will deployed an Agri team for promoting contract farming and developing linkage between farmer and processors.

## Some Numbers from the Cluster

- around 66% of the total production of fruits in the state, fruits includes mango, banana, chiku, papaya and guava.
- 21% of the total vegetables produced in the state, the process-able vegetable includes okra, tomato, cauliflower, beans, sweet corn.
- almost 37% of the pulses in the state, Tur and Udad being the important ones.
- about 20% of state's milk
- 94% of Sugarcane

**Continuous Supply , Collaborative Benefits , Max ROI**



# GAIMFP - Strategically Located for sourcing raw material

Raw Material Availability - Units in Million MT								
Component	Fruits (In MT)	Vegetable (In MT)	Cereals (In MT)	Pulses (In MT)	Spices (In MT)	Milk (In MT)	Sugar-cane (In MT)	Egg Nos.
Bharuch	1.143	0.111	0.086	0.072	0.839	0.147	0	8.7
Narmanda	0.537	0.087	0.036	0.018	1.486	0.072	0.015	6.2
Anand	1.085	0.41	0.511	0.005	2.852	0.437	0.009	634
Surat	0.639	0.346	0.108	0.024	1.533	0.354	0	54
Vadodara	0.818	0.519	0.49	0.102	4.356	0.389	0.074	15.5
Valsad	0.296	0.154	0.154	0.013	0.318	0.17	0.005	32.5
Navsari	0.376	0.286	0.091	0.016	1.8	0.204	0.006	49.7
Tapi	0.247	0.248	0.122	0.02	6.213	0.192	0.016	33.8
Total of Cluster	5.141	2.161	1.597	0.268	19.396	1.965	0.125	834.4
Rest of Gujarat	2.622	7.889	7.752	0.454	97.451	7.851	0.005	441.8
Total of Gujarat Cluster	7.763	10.05	9.349	0.722	116.847	9.816	0.13	1276.2
% Within Cluster	66%	22%	17%	37%	17%	20%	96%	65%

**At peak estimated capacity Less than 5% of Total cluster production is sufficient to satisfy raw material requirements at the Food park. Hence your sourcing costs are optimized for maximum gains.**



# GAIMFP is Located Strategically for sourcing raw material

Horticulture Crops	Jan	Feb	Mar	Apr	May	Jun	Jul	Aug	Sep	Oct	Nov	Dec
Mango												
Banana												
Papaya												
Guava												
Chiku												
Okra												
Tomato												
Cowpea												
Cauliflower												
Beans												
Peas												
Sweet corn												
Potato												
Tur												
Udad												
Paddy												
		Lean		Peak		No Aval.						

**Cluster Sufficiency in Supply even in Off Peak or Lean Periods**



# Strategically Located to Reach out to Markets

- Surat
  - Ahmedabad
  - Baroda
  - Anand
  - Nadiad
  - Mumbai
  - Dhule & Nasik
- Locational advantage is a key to success of any business unit
  - Food Park is strategically Located to cater to all key markets both Domestic and Export – 6 Crore Local Population
  - Even industry experts feel Gujarat Food Park Location is the best in parks awarded.



*“Your Park is logistically so very well located. I am sure this advantage will be a big one.”*

**Mani GVS**

*General Manager - Operations & BD*

***Future Group (Integrated Food Park)***





# Strategically Located - Favorable Agro-climatic conditions

Built in one of the finest Agri-zone in India



Optimal Solar power utilization

Favorable climate

Excellent connectivity

Fertile Land

Abundant water Supply



## Strategically Located – Ample Human resource Availability



- The Location of GAIMFP ensures ample labour supply
  - The location is classified under 'Tribal Area'
    - Local labour in ample
- Gujarat state by itself has no labour issues in terms of availability of labour



# Key Advantages GAIMFP –Through the Scanner

is Strategically Located

is built in Pollution Free Area with Excellent Connectivity

offers ready PLUG & PLAY Infrastructure to start

offers suitable facilities for Food Processing Industry not general industrial facilities

offers ancillary support system for processing & warehousing

Is located in area which has ample labor supply

is managed by experienced players in market



## GAIMFP allows **QUICK START!!** – PLUG & PLAY Infrastructure

- Infrastructure Ready Industrial Plots and Ready Pre-Built Plug & Play Sheds for MSME Units - to set up about 30 food processing units.
- Basic enabling Infrastructure at MFP-
  - Wide Roads, Compound Wall, Street Lights, Fire Fighting & Safety, Security,
  - Weigh Bridge, Water Supply, Power Infrastructure including solar power,
  - Sewers & Central Effluent Treatment Plant (CETP),
  - Common Technical Infrastructure- Cold & Frozen Storage, Warehousing, Laboratory available on Pay to Use basis to all units in MFP
  - Access to Backward Integration – 4 Primary Processing / Collection Centers
- Common facilities at Primary Processing & Collection Centers (PPC) which are strategically located to feed raw materials to the Mega Food Park (CPC) will include-
  - Sorting & Grading line, Material handling equipment and storage facilities, Cold Storages



# Facilities specific to Food Processing Industry

- Unlike other Industrial options, GAIMFP offer facilities suitable to Food Processing Industry
- Facilities Include –
  - Common Processing Facilities-
    - IQF line, Pulping line, and State of the Art Testing laboratory
  - Other common facilities-
    - Warehouses, Cold stores, Reefer vans and other transport vehicles.
  - Non Core Amenities-
    - Farmer facilitation centre, business centre with conference room and Offices for Services like Bank, Courier, Insurance, Electricity, Communication & electronic surveillance , Workers' amenities



# GAIMFP offers support system for processing & warehousing + ancillary industries

- GAIMFP offers ancillary support system for processing & warehousing facilities suitable to Food Processing Industry
- Facilities Include –
  - Pre-Cooling
  - Grading
  - Pulping
  - Sorting
  - Packing
  - Temporary Storage
- Also, will encourage small & medium processors to set up units at GAIMFP

## Enabling an Ecosystem





# Advantages for Food Processors

- **Incentives & Financial Assistance To Industries set up In Gujarat Agro Infrastructure Mega Food Park**
  - Ministry of Food Processing Industries (MoFPI) Approved Project - Hence easier release of subsidy funds of MoFPI Schemes to Food Processing Units.
  - Industries Ministry – Govt of Gujarat Approved project as an Industrial Park - Hence easier release of incentives of Gujarat's "SCHEME OF ASSISTANCE TO MANUFACTURING SECTOR"
  - Park Operational and Commissioning by March 2017
  - Short Start-up Time – Ready Availability of Non-Agriculture Converted Plots & Sheds – Plots can be allotted right away and possession given
  - Conducive, homogenous and clean environment as only Food Processors allowed in the Park



# Advantages for Food Processors (continued)

- **ZERO Stamp Duty**
- Exemption from Income Tax for 5 Years from commissioning date in case of a new Company.
- **Substantial Reduction in Capital Costs**
  - Readily available Cold Store and Warehouse for either Raw material or Finished Good Storage
  - We can invest in a Capital Incentive Machinery such as a Packaging line such as Tetra Pack / Aseptic Packaging or Pulping Line and Food Processor can lease it
  - **Easy Availability of Surface Water (Canal Sourced); right till Entrance of your Plot**
  - **Easy Availability to Electricity; right till Entrance of your Plot**
  - **Readily available CETP facility**
- Financial assistance from NABARD under food processing fund exclusively available to units in Food Parks
- Lower import duty on Imported Machinery



# Political Will and Support – Monitoring of Food Park Projects by PM under PRAGATI

## PM's interaction through PRAGATI

December 30, 2015

- PM Modi chairs eighth interaction through PRAGATI
- Prime Minister Modi reviews progress of the Food Park Scheme**
- PM Modi reviews progress of the Hyderabad Metro Rail Project
- PM reviews progress of Eastern Dedicated Freight Corridor
- PM Modi reviews progress of Delhi-Haryana-Uttar Pradesh Eastern Peripheral Highway

## < Tweet



**Narendra Modi** ✓  
@narendramodi

Today's PRAGATI meeting had a focus on infrastructure projects across India. We reviewed the Food Park Scheme & it's benefits to the people.

7:53 pm · 30 Dec 15

1,935 RETWEETS 5,382 LIKES

### news report:

**“The Prime Minister reviewed the status of implementation of Mega Food Parks Project and urged expediting the work project .....so that farmers receive the intended benefit as envisaged in the scheme, he added.....**

**.....The park shall be having agriculture/ horticultural- processing zone containing state-of-the art processing facilities with support infrastructure and well-established supply chain.”**

